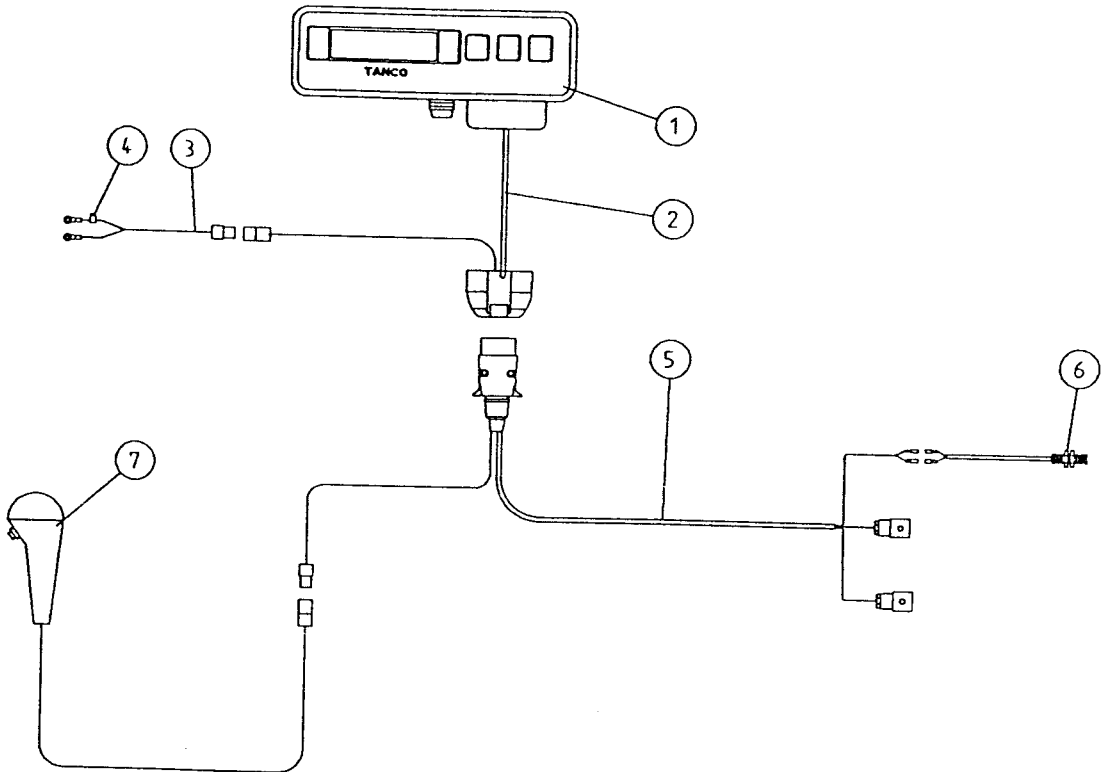


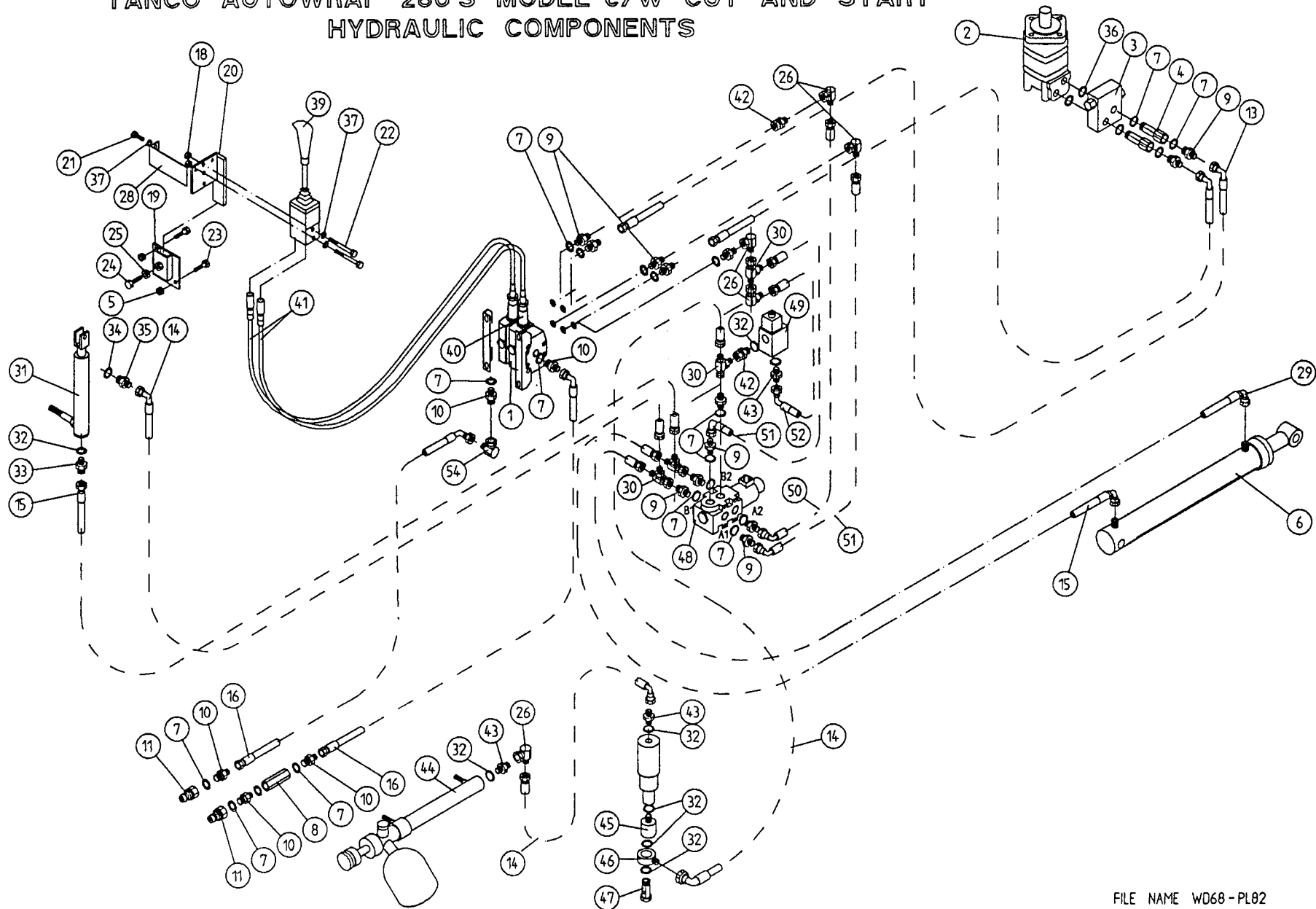
# TANCO AUTOWRAP 280S MODEL ELECTRIC COMPONENTS



## PARTS LIST

ITEM No.	DESCRIPTION	QTY.	PART No.
1	LYKKETRONIC PX MONITOR	1	D606C-S
2	7 PIN SOCKET CABLE 200mm LONG	1	ZLY-P08
3	MAIN BATTERY LEAD	1	ZLY-P12
4	7.5 AMP INLINE FUSE	1	ZD606-108
5	7 CORE CABLE C/W CONNECTORS	1	ZLY-P13
6	ROTATE SENSOR	1	ZLY-P14
7	JOYSTICK C/W MICROSWITCH	1	Z004-03-018

# TANCO AUTOWRAP 280 S MODEL c/w CUT AND START HYDRAULIC COMPONENTS



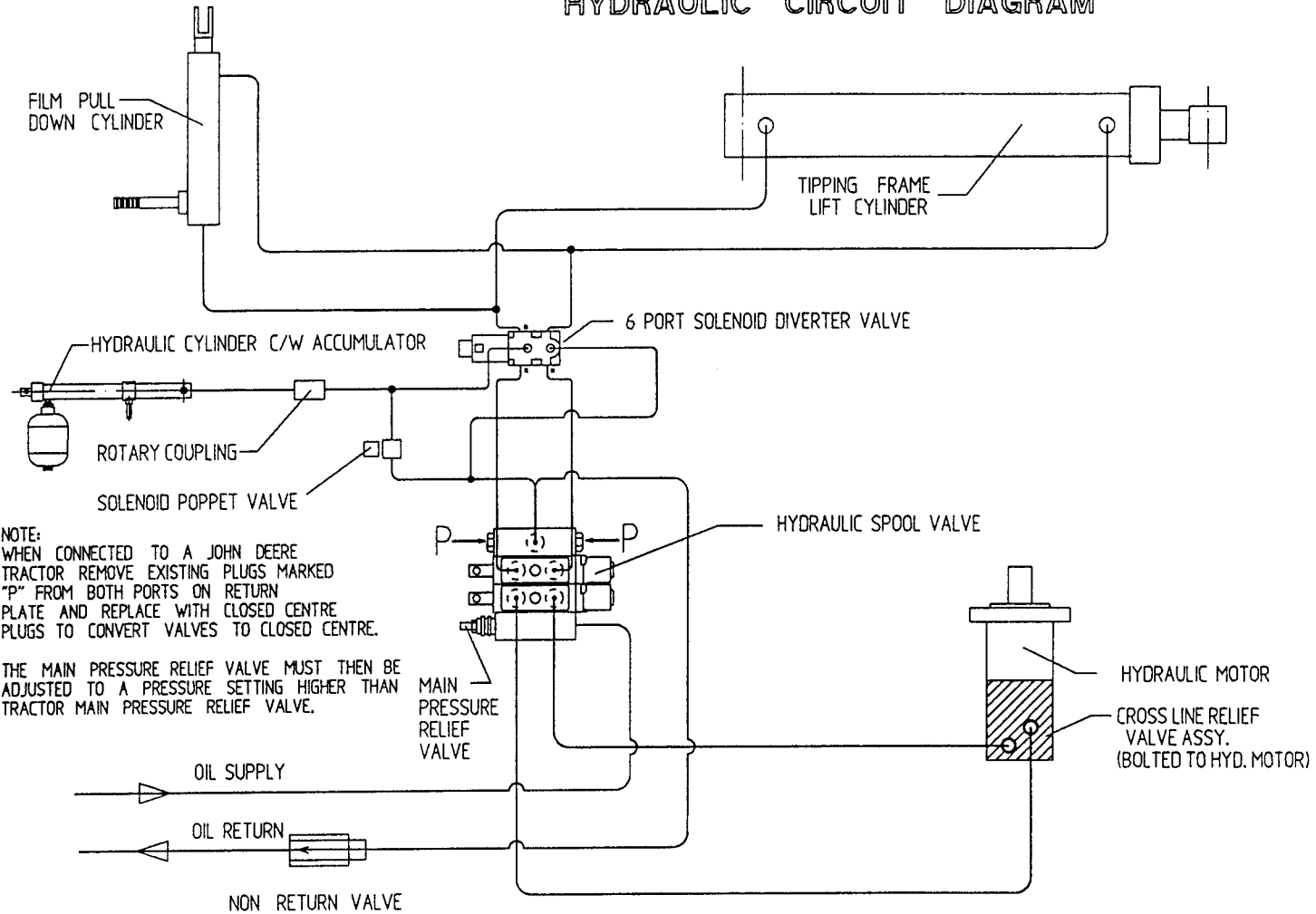
FILE NAME WD68-PL02

WD68-PL82.

**TANCO AUTOWRAP 280 S MODEL C/W CUT & START  
HYDRAULIC COMPONENTS  
PARTS LIST**

ITEM NO	DESCRIPTION	QTY.	PART -NO
1	3 BANK SPOOL VALVE (DIN)	1	Z01-03-018D2
2	HYDRAULIC MOTOR (CL)	1	Z01-02-RF200
3	CROSS LINE RELIEF VALVE	1	Z01-03-004
4	1/2" BSP BOTTOM BANJO BOLT (SPECIAL)	2	Z01-03-002B
5	M10 LOCKNUT	3	Z23-10
6	HYD. RAM (FOR TIPPING FRAME)	1	Z01-01AR687
7	1/2" DOWTY WASHERS	19	Z01-04-03
8	1/2" NON RETURN VALVE	1	Z01-03-017
9	1/2" x 3/8" ADAPTOR	12	Z01-06-06-08
10	1/2" x 1/2" ADAPTOR	9	Z01-06-08-08
11	1/2" MALE END Q/R COUPLING	1	Z01-15-081
13	108" ST/90 3/8" D/W HOSE	3	Z38-R2-108-S9
14	72" ST/90 3/8" D/W HOSE	2	Z38-R2-72-S9
15	48" ST/90 3/8" D/W HOSE	1	Z38-R2-48-S9
16	108" ST/90 1/2" D/W HOSE	2	Z12-RI-108-S9
18	M8 LOCKNUT	3	Z23-08
19	ACTUATOR MTG BRACKET (LOWER)	1	WD65-AML
20	ACTUATOR MTG BRACKET (UPPER)	1	WD65-AMU
21	M8 x 20mm HEX SET	2	Z26-039S
22	M8 x 70mm BOLT	1	Z26-049B
23	M10 HEX HD SETS x 40mm LONG	3	Z26-064S
24	M12 HEX HD SET x 40mm LONG	1	Z26-084S
25	M12 HEX NUT	1	Z18-12
26	3/8" MALE x 3/8" FEMALE 90 ELBOW	5	Z01-14-015
27	ACTUATOR LEVERS	1	Z004-03-009
28	STICKER MOUNTING PLATE	1	WD60-794
29	60" ST/90 3/8" DAN HOSE	1	Z38-R2-60-S9
30	3/8" FEMALE x 3/8" MALE/MALE "T" PIECE	4	Z01-12-002
31	HYDRAULIC RAM D/A	1	Z01-01-AW25
32	3/8" DOWTY WASHER	1	Z01-04-02
33	3/8" x 3/8" ADAPTOR FITTED WITH 0.06" RESTRICTOR	1	Z01-03-40
34	1/4" DOWTY WASHER	1	Z01-04-01
35	1/4" x 3/8" ADAPTOR	1	Z01-06-04-06
36	COPPER WASHER	1	Z01-04-15
37	8mm SPRING WASHER	3	Z12-02-08
39	JOYSTICK ACTUATOR	1	Z004-03-013
40	CABLE FITTING KIT DIN OIL	2	Z004-03-014
41	3.5M JOYSTICK CABLE	2	Z004-03-00753
42	3/8"MALE/FEMALE ADAPTOR	1	Z01-05-06-06
43	3/8" MALE/MALE ADAPTOR	1	Z01-06-06-06
44	CUT AND START	1	Z01-01-AWH9
45	ROTARY COUPLING	1	Z01-02-AWR
46	3/8" BANJO COUPLING	1	Z01-19-062
47	3/8" SINGLE TOP BANJO BOLT	1	Z01-20-062
48	6 PORT SOLENOID VALVE	1	Z01-03-103
49	2 PORT SOLENOID POPPET VALVE	1	Z01-03-103
50	30" ST/90 3/8" DW HSE	2	Z38-R2-30-S9
51	18" ST/90 3/8" DW HOSE	1	Z38-R2-18-S9
52	14" ST/90 3/8" DW HOSE	1	Z38-R2-14-S9
53	96" ST/90 3/8 " DW HOSE	1	Z38-R2-96-S9
54	1/2" MALE x 1/2" FEMALE ELBOW	1	Z01-14-016

# TANCO AUTOWRAP 280 S MODEL c/w CUT AND START HYDRAULIC CIRCUIT DIAGRAM



NOTE:  
WHEN CONNECTED TO A JOHN DEERE  
TRACTOR REMOVE EXISTING PLUGS MARKED  
"P" FROM BOTH PORTS ON RETURN  
PLATE AND REPLACE WITH CLOSED CENTRE  
PLUGS TO CONVERT VALVES TO CLOSED CENTRE.

THE MAIN PRESSURE RELIEF VALVE MUST THEN BE  
ADJUSTED TO A PRESSURE SETTING HIGHER THAN  
TRACTOR MAIN PRESSURE RELIEF VALVE.